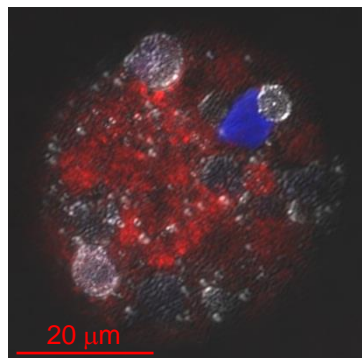
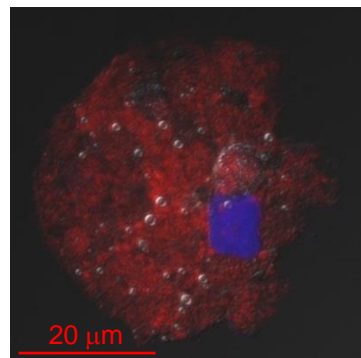


## Markers of Neutrophil granules:

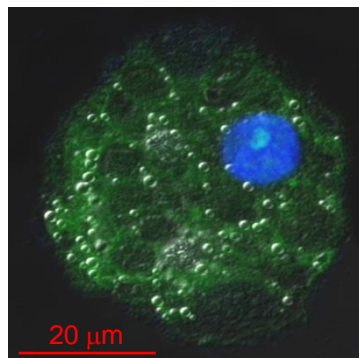
**CD66b** (specific granules)



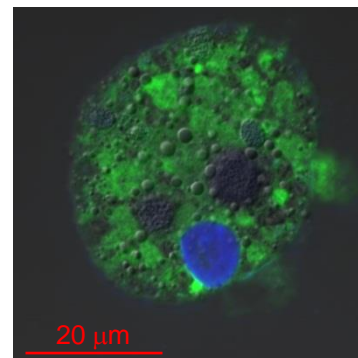
**CD63** (azurophil granules)



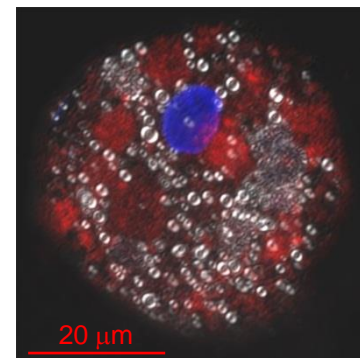
**MPO** (azurophil granules)



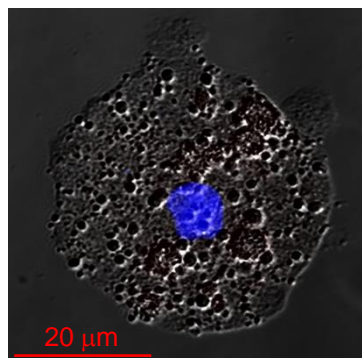
**Neutrophil Elastase**



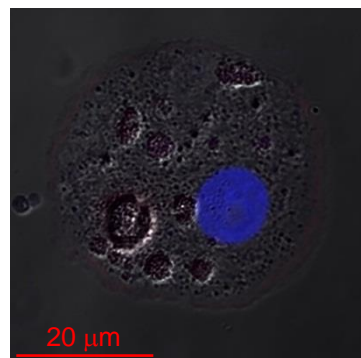
**CD15**



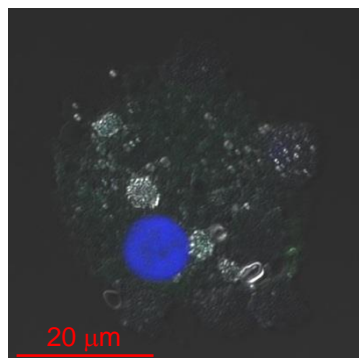
**CD1c**



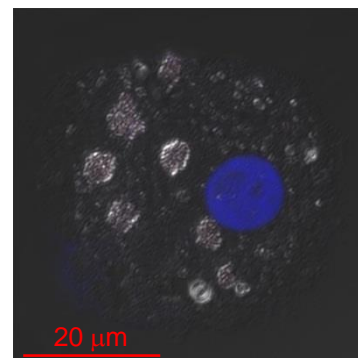
**CD141**



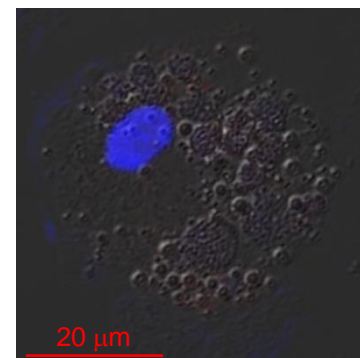
**CD16**



**CD14**

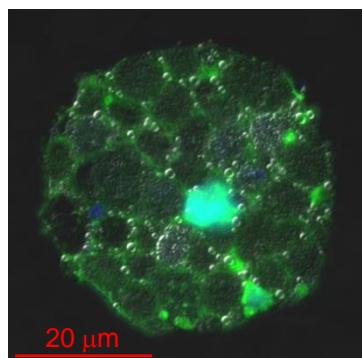


**CD163**

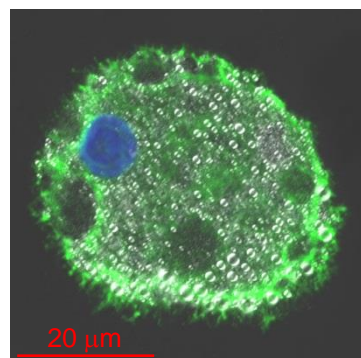


## Scavenger receptors:

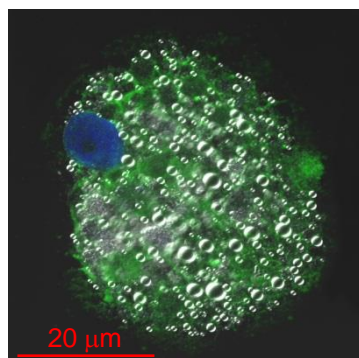
**LC3B**



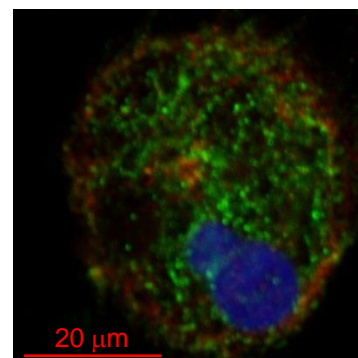
**CD68**



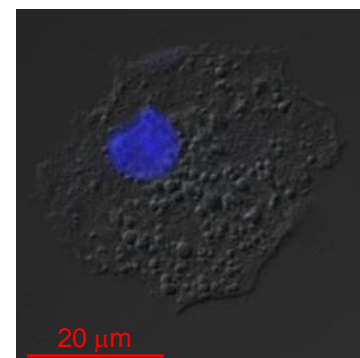
**CD36**



**Gp91-phox/p22-phox**



**Isotype control**



**Figure 6**